



## DeLaval milking cluster MC73

Reliable hour after hour, day after day



### **Designed for high-production dairies milking around the clock**

DeLaval milking cluster MC73 is designed and built to reliably handle continuous operation.

This heavy duty cluster incorporates our patented TF (Top-Flow) technology, nipple-less design to handle extreme milk flows with minimal vacuum fluctuations. The innovative claw shape prioritizes milking comfort for the milker, with maximum milk production efficiency and performance.

# Reduce milking time, increase productivity



## Fast-flow capacity

The MC73 is specifically designed to meet the needs of highest production herds. It utilizes a 350 ml claw to easily handle high milk volumes. The MC73 large bore milk outlet further enhances fast flow and continuous milking. This large capacity helps reduce milking time and improve production efficiency.

## Design innovations

The innovative TF (Top-Flow) technology offers quick and gentle milk delivery from this heavy-duty cluster. Its angled liner inlet offers optimal teat placement and gives efficient shut-off by reducing air admission during attachment.

## Safe to use

The claw's robust stainless steel body offers durability for 24/7 production and incorporates concave transparent windows that allow the milker to visually monitor milk flow. Optimized liner design combines with a nipple-less connection to provide even and safe milk delivery in to the claw. Using nipple-less design results in no liner cuts. The short milk tube's large diameter enables stable vacuum minimising the risk of milk plugs and cross-flows.

## Milker and cow comfort

The MC73's compact, well-balanced design conforms to the palm of most hands to help reduce milker fatigue and provide effective cluster control. DeLaval milking cluster MC73 liners stimulate the natural suckling motion of a calf reducing slips, squawks and unit adjustments.

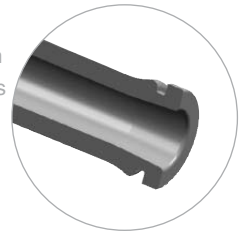


# MC73 is designed for milking around the clock



The compact and well-balanced design comfortably fits in the palm of the hand.

The short milk tube's large diameter enables stable vacuum minimising the risk of restrictions and cross flows. Optimized liner design mimics the calf's natural suckling motion.



Heavy-duty stainless steel material gives durable and reliable performance.

Concave, transparent windows provide excellent visibility to monitor milking flow.



Nipple-less design allows an unrestricted milk flow to the claw and stable vacuum levels during the entire milking cycle. This design results in no liner cuts.

A 350 ml claw with TF (Top-Flow) technology can quickly handle high milk flows without flooding.



The support ring provides efficient liner shut-off.

An angled liner inlet matches the udder.



### Cluster specifications

Weight	2,1kg
Short milk tube Ø	12,5mm
Outlet ID	16mm
Claw volume	350ml



## Surround your milking clusters with reliable and innovative equipment from DeLaval

### Correct cluster alignment

Thorough DeLaval research and development has taught us that correct cluster positioning is essential for efficient milking, reduced slips and fall-offs. Easy-to-handle DeLaval clusters combine with a range of tubing materials, to assist correct and comfortable alignment. To further improve cluster positioning and working routines we strongly recommend using DeLaval alignment accessories.

### Natural flow control

DeLaval has developed a diverse range of equipment to meet each cow's unique milk let-down speed. For example you can use two vacuum levels to stimulate the cow prior to let-down, or remove the cluster at the correct time in combination with the automatic cluster remover, to reduce the chance of over-milking. These innovative products adjust to the cow's individual needs, to help ensure efficient milking.

### Milk metering facts

DeLaval milk meters allow you to efficiently monitor and record milk yield, herd health status and feed intake on a daily basis. You can use our unique milk meter programme either together with your DeLaval herd management system or stand-alone. Our milk meters are approved by ICAR (International Committee for Animal Recording). ICAR is a non-governmental, non-profit organization aimed at promoting development and improvement of performance recording activities and farm livestock evaluation.

### Automatic cluster removal

Removing the cluster automatically is a comfortable and convenient end to milking. DeLaval automatic cluster removers work in conjunction with our flow-control devices to eliminate over-milking. This reduces the risk of mastitis and offers smoother work-flow with less related injuries.

### Effective cleaning control

High quality milk production requires thorough cleaning of the entire milking system after every milking. A DeLaval cleaning system provides effective cleaning by maintaining tight control of all five key cleaning parameters including detergent type, temperature, contact time, turbulence and water volume. The cluster cleaner's design perfectly matches our wide liner range, to help ensure the mouthpiece of the liners is not damaged during cleaning.

### Unbeatable service

A milking system is the hardest working piece of dairy farm equipment. Effectively maintaining your system is vital to ensuring maximum profit from your herd. DeLaval partners you with original parts, highly qualified service technicians and a determination to optimize your milk production. For optimal milking performance, DeLaval original liners should be replaced after 2,500 cow milkings or six months, whichever comes first. We offer a complete program, covering everything from emergency service to preventive maintenance.

